

Uncut Roux

Clinical Results and Histologic Change on Animal Model with Modified Uncut Roux Reconstruction after Gastrectomy

Myung Nam Kim, MD, Moon Soo Lee, MD, Tae Yun Kim, MD, Gyu Seok Cho, MD, Man Kyu Chae, MD, Sung Yong Kim, MD, Moo Jun Baek, MD, Kyung Kyu Park, MD, Chang Ho Kim, MD, Ok Pyung Song, MD, and Moo Sik Cho, MD.

Purpose: The uncut Roux operation prevents the Roux stasis syndrome by preserving neuromuscular continuity between the proximal jejunum and the Roux limb, but this technique has an unacceptably high incidence of dehiscence of the staple lines with subsequent reflux gastritis or esophagitis. The authors designed a modified uncut procedure to avoid dehiscence of the staple lines. The aim of this study was to review whether this technique might be useful by examining the histologic change on animal study and the postoperative radiologic study of patients with modified uncut reconstruction.

Methods: Between February 1997 and December 2000, the UGI study was reviewed in 213 patients undergoing the modified uncut Roux reconstruction at Soonchunhyang University Hospital, Chunan, Korea, at 2 and 8 weeks after operation, to evaluate the incidence of dehiscence and the leakage of staple lines. Animal study included ten pigs, 5 underwent conventional uncut Roux procedure with staple, while the other 5 received reinforcing whole layer suture with black silk on the staple lines. The animals then underwent a second operation at 15 days after operation to evaluate

histologic change and dehiscence of staple lines.

Results: Dehiscence and leakage were not found in any of the 213 patients undergoing modified uncut Roux reconstruction. In the animal study, 2 of 5 cases (40%) receiving conventional uncut Roux reconstruction had dehiscence, whereas dehiscence was absent in all 5 cases receiving modified uncut Roux reconstruction and these 5 animals showed more marked infiltration of inflammatory cells, vascular formation and more severe fibrosis on histologic examination.

Conclusion: The conventional uncut Roux procedure suffer dehiscence of the staple lines with subsequent reflux gastritis or esophagitis. Therefore, modified uncut Roux reconstruction might prevent a jejunal leakage in the case of staple line dehiscence and might prevent dehiscence of staple lines. (*J Korean Surg Soc* 2002;63:187-192)

Key Words: Uncut Roux reconstruction, Dehiscence
: Uncut Roux

Department of Surgery, College of Medicine, Soonchunhyang University, Chunan, Korea

: 23-20

330-721,

Tel: 041-570-2146, Fax: 041-571-0129

E-mail: msslee@schch.co.kr

: 2002 6 17 , : 2002 7 31
2001

2002

, Dumping
Roux-en-Y
30%
Roux stasis
. Roux stasis
pacemaker potential Roux
. Roux stasis
1988 Van Stiegmann Goff
Roux-en-Y

uncut Roux-en-Y

45 cm - uncut 213

가 5 staple uncut , 5
pacemaker potential staple black silk 4 uncut
Roux Roux . Fig. 1 uncut
Roux Roux . Fig. 1 -
stasis - 30 cm 5 cm -
1990 uncut Roux procedure 20 cm TA stapler (USSC)
loop myoneural continuity 30 4.8 mm stapling , staple line black
Roux stasis silk 4 3 .
staple dehiscence leakage uncut 213 2 8
1997 staple staple line
5 . 15
uncut staple 23 staple line staple line
38.9%, silk 5 18
34.8% 가
(I) uncut 가
, 1997
uncut Roux

213 59.5 가 130 ,
가 83 . 가 124 ,
가 36 , 가 53 1 가 11 , 2 가 42 ,
3 가 127 4 33 .

Table 1. Clinicopathologic features of patients

Variables	No. of patients (%)
Age, year (Mean)	59.5
Sex	
Male	130 (61.0)
Female	83 (39.0)
Location	
Upper	124/213 (58.2)
Middle	36/213 (17.0)
Lower	53/213 (24.8)
Depth of invasion	
T1	12/213 (5.6)
T2	43/213 (20.2)
T3	125/213 (58.7)
T4	33/213 (15.5)
Stage (UICC)	
I	11/213 (5.2)
II	42/213 (19.7)
III	127/213 (59.6)
IV	33/213 (15.5)
Extent of resection	
Total gastrectomy	136/213 (76.2)
Subtotal gastrectomy	77/213 (23.8)

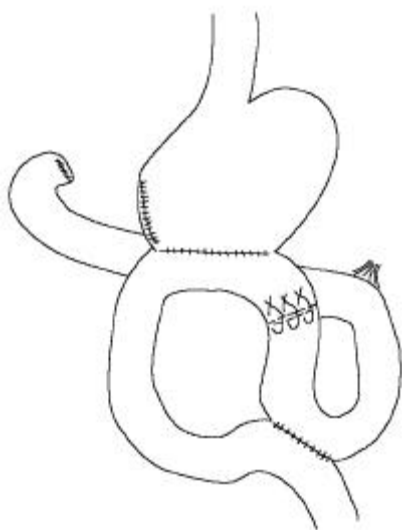


Fig. 1. Modified uncut Roux reconstruction using reinforcing whole layer suture with black silk on the staple line.

1997 1 2000 12 612

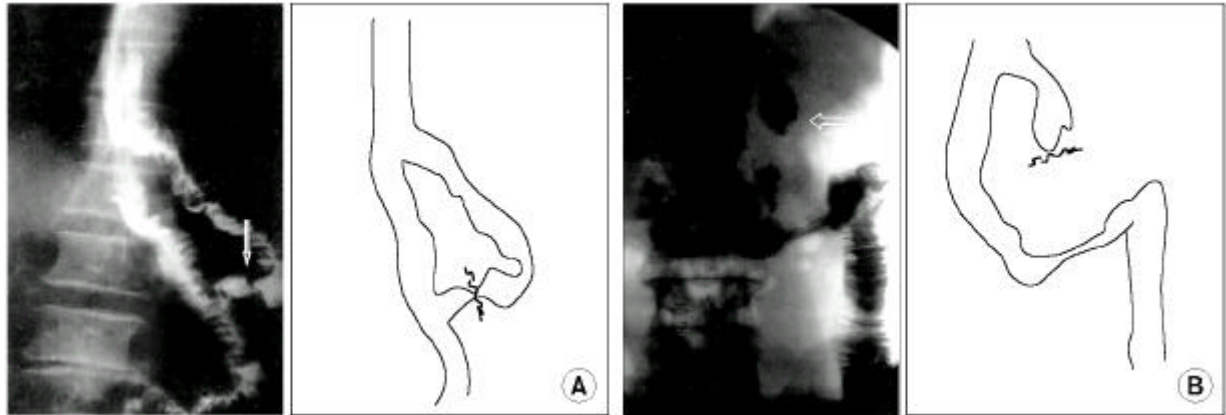


Fig. 2. UGI study. The passage of contrast media through the conventional uncut Roux procedure was identified (A). The passage of contrast media through reinforcing whole layer suture with black silk on the staple line was not identified (B).

Table 2. Dehiscence rate on animal study (N=10)

	Dehiscence	Intact	Total
Conventional uncut*	2 (40%)	3	5
Modified uncut*	0	5	5

*Uncut = uncut Roux-en-Y reconstruction.

136 , 77 (Table 1).
 (I) uncut 가
 uncut Roux 23 8 (34.8%) (Fig. 2A)
 8 213 2
 (Fig.
 2B). Roux stasis uncut
 uncut uncut
 15 uncut
 40% uncut
 가 (Table 2).
 15 staple line HE stain 200
 uncut uncut
 가
 . Collagen fiber Masson trichrome stain
 uncut uncut
 collagen fiber (Fig. 3).

가
 .
 Moyinihan(2)
 (Braun) 가
 .
 가 .(3) 1947 Orr(4)
 Roux-en-Y
 ,(5) 1952 Hunt
 . 1957 Von A. Plenk(6)
 Braun
 1
 가
 . 1962 Lawrence(7) Hunt Orr
 Roux-en-Y -
 , 1973 Paulino (8) Hunt-Lawrence-pouch
 Roux-en-Y - 가
 .(9,10)
 Roux-en-Y (11) (12)
 .
 30% , , ,
 Roux stasis
 Roux-en-Y 가
 . ,

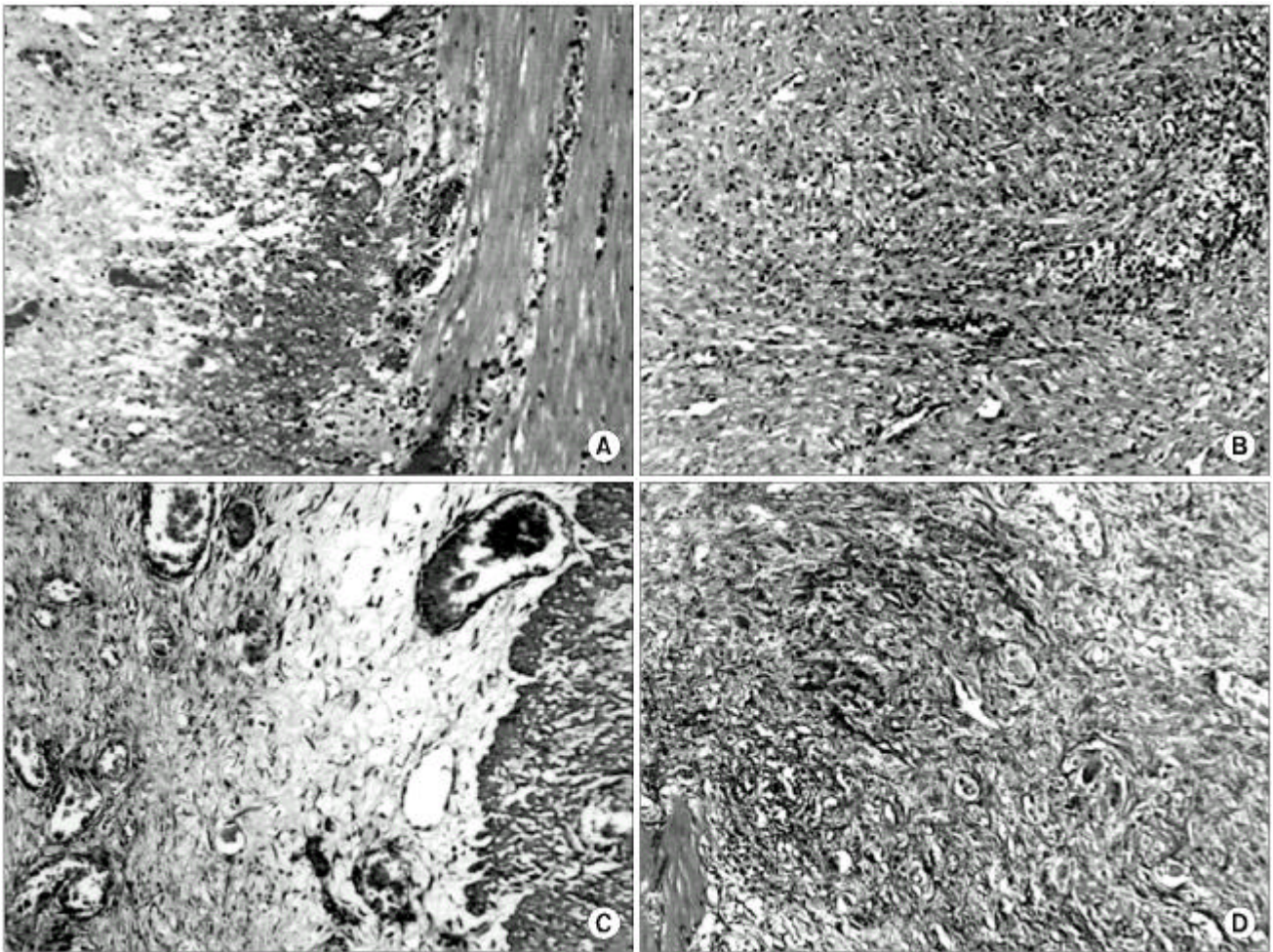


Fig. 3. Histologic staining of staple line on animal model. B (modified uncut procedure) shows more marked infiltration of inflammatory cells and vascular formation than A (conventional uncut procedure) on H&E stain ($\times 200$). D (modified uncut procedure) shows more severe fibrosis than C (conventional uncut procedure) on Masson trichrome stain ($\times 200$).

Roux	Roux-en-Y	Roux limb	Stiegmann	Goff(15)	Roux-en-Y	1988	van
				"uncut"	Roux procedure		
Roux	Roux		-			45 cm	
	Roux-en-Y		-				
		(13)		가	staple line		
Roux-en-Y				staple line		Roux limb	
		Roux limb					
		stasis					
	Roux limb				pacemaker	Roux limb	
	pacemaker				Roux stasis		
limb	ectopic pacemaker가	Roux		Miedema	(16)		uncut
pacemaker potentials				Roux-en-Y	가	staple line	uncut
가	(14)			Roux limb	myoneural continuity		

ectopic pacemaker , Roux staple line
 limb . Van Stieg- (1)
 mann (15) uncut Roux limb uncut

Nguyen Tu (17) uncut Roux . Staple line
 14 1 36% 5 staple line .(22)

conventional Roux limb staple line dehiscence staple line dehiscence uncut

, Mulholland (18) staple line 14 uncut staple line 가
 uncut Roux-en-Y uncut , staple line
 Myoneural continuity
 staple line dehiscence uncut uncut
 1995 Tu (17) Roux stasis
 가 staple de-
 hiscence
 , 1988
 (19) , Braun

Kim's method , 1994 (20)
 Plenk 99 Roux- uncut staple line
 en-Y 가 가
 44.8% 가
 , stapling technique
 uncut staple line collagen
 (16) uncut Roux 가
 staple line
 (17) uncut Roux Roux stasis

(21) Uncut Roux limb
 conventional Roux-en-Y reconstruction Roux

1997 Uncut Roux 41 ,
 staple 23 5
 18
 8 (34.8%), 7 (38.9%)
 Delayed gastric emptying
 staple
 가 .(1) uncut Roux

REFERENCES

- 1) Lee DK, Lee MS, Baek MJ, Song OP, Cho MS. Uncut Roux procedure after total gastrectomy. J Korean Surg Soc 1997; 53:511-7.
- 2) Moyinihan B. A case of complete gastrectomy. Lancet 1911; 2:430.
- 3) Lahey FH, Marshall SF. Should total gastrectomy be employed in early carcinoma of the stomach? Ann Surg 1962;155:191-9.
- 4) Orr TG. A modified technique for total gastrectomy. Arch Surg 1947;54:279-86.
- 5) Scott HW Jr, Weider MG. Total gastrectomy with Roux-en-Y

- esophago-jejunostomy in treatment of gastric cancer. *Ann Surg* 1956;143:682-96.
- 6) Hunt CJ. Construction of food pouch from segment of jejunum as substitute for stomach in total gastrectomy. *Arch Surg* 1952;64:601-8.
 - 7) Lawrence W Jr. Reservoir construction after total gastrectomy an instructive case. *Ann Surg* 1962;155:191-8.
 - 8) Paulino F, Roselli A. Carcinoma of the stomach with special reference to total gastrectomy. *Cruu Probl Surg. Year Book Medical* 1973;Dec:65.
 - 9) Markku BL. Total and proximal gastrectomy in the treatment of gastric carcinoma. A series of 305 cases. *World J Surg* 1947;5:279-89.
 - 10) Schrock TR, Way LW. Total gastrectomy. *Am J Surg* 1978;135:348-55.
 - 11) Griffiths JMT. The features and course of bile vomiting following gastric surgery. *Br J Surg* 1974;61:617-22.
 - 12) Vogel SB, Hocking MP, Woodward ER. Clinical and radio-nuclide evaluation of Roux Y diversion for postgastrectomy dumping. *Am J Surg* 1988;155:57-62.
 - 13) Gustavsson S, Ilstrup DM, Morrison P, Kelly KA. Roux-Y stasis syndrome after gastrectomy. *Am J Surg* 1988;155:490-4.
 - 14) Morrison P, Miedema BW, Kohler L, Kelly KA. Electrical dysrhythmias in the Roux jejunal limb: cause and treatment. *Am J Surg* 1990;160:252-6.
 - 15) Van Stiegmann G, Goff JS. An alternative to Roux-en-Y for treatment of bile reflux gastritis. *Surg Gynecol Obstet* 1988;166:69-70.
 - 16) Miedema BW, Kelly KA. The Roux stasis syndrome. Treatment by pacing and prevention by use of an "uncut" Roux limb. *Arch Surg* 1992;127:295-300.
 - 17) Nguyen Tu B-L, Sarr MG, Kelly KA. Early clinical results with the uncut Roux reconstruction after gastrectomy: limitations of the stapling technique. *Am J Surg* 1995;170:262-4.
 - 18) Mulholland MW, Magakkanes F, Quigley TM, Delaney JP. In-continuity gastrointestinal stapling. *Dis Colon Rectum* 1983;26:586-9.
 - 19) Kim JP, Chung M. Clinical analysis of gastric cardiac cancer. *J Korean Surg Soc* 1988;34:269-76.
 - 20) Jun SY, Yu WS, Whang IW. Plenk reconstruction after total gastrectomy. *J Korean Surg Soc* 1994;46:680-7.
 - 21) Noh SM. Improvement of the Roux limb function using a new type of "uncut Roux" limb. *Am J Surg* 2000;180:37-40.
 - 22) Ellison EC, Martin EW Jr, Laschinger J, Mojzisek C, Hughes K, Carey LC. Prevention of early failure of stapled gastric partitions in treatment of morbid obesity. *Arch Surg* 1980;115:528-33.
-