

Review of Splenectomy, Pancreas-preserving Splenectomy, Pancreatosplenectomy for Combined Radical Total Gastrectomy

Gun-Sik Mn, MD, Jin-Woo Cha, MD, Ji-Hoon Kim, MD, Yong-Kwan Cho, MD, Sang-Uk Han, MD. and Myung-Wook Kim, MD.

Purpose: Splenectomy, pancreas-preserving splenectomy, pancreato-splenectomy are common combined operations of a total gastrectomy for gastric cancer. We attempted to determine the efficacy of these procedures after comparing and analyzing the complication rate and the five-year survival rate from the gastric cancer patients.

Methods: 121 advanced gastric cancer patients, except T4 patients, underwent radical total gastrectomy accompanied with splenectomy. and analyzed the clinical findings eg. age, sex, location of tumor, histological differentiation, lymph node metastasis, number of dissected LN, complication and the 5-year survival rate.

Results: 44 out of 121 patients underwent a pancreato-splenectomy, 53 patients underwent a pancreas-preserving splenectomy, and 24 patients underwent a simple splenectomy. There were no statistical difference in the patient's age, sex, location of tumor, histological differentiation, lymph node metastasis, the number of dissected LN and the 5 year-survival rate in stage II, IV with each operation. However, a pancreas-preserving splenectomy showed a better 5-year survival rate (53.7%) than a simple splenectomy (25.0%) and pancreato-splenectomy (32.1%) in stage III. The complication rate was 25% in a simple splenectomy, 17% in a pancreas-preserving splenectomy, 30% in a pancreato-splenectomy. Diabetes mellitus occurred in 3 patients who underwent a pancreato-splenectomy, in 1 patient with an iatrogenic splenic vein excision during a pancreas-preserving

splenectomy.

Conclusion: A pancreas-preserving splenectomy is the best choice in stage IIIa total gastrectomy patients with the lowest complication rate. (J Korean Surg Soc 2002;63:397-402)

Key Words: Gastric cancer, Total gastrectomy, Pancreas-preserving splenectomy

Department of Surgery, Ajou University School of Medicine, Suwon, Korea

	1	2	D2+
(LN11)(I)	가	(2,3)	(LN10)(I)
Kanai(4)	가		
Maruyama (5)			5
	가		
	가		5

: 5
 ☎ 442-721,
 Tel: 031-219-5205, Fax: 031-219-5755
 E-mail: choyk@ajou.ac.kr
 : 2002 6 7 , : 2002 8 27
 2002

1) 1994 6 1998 12
 180 T4
 121 24
 , 53
 , 44

2) Maruyama(5)가
 D2
 T4
 1/3
 가 2
 36 (67.9%), 13 (54.2%),
 33 (75%)
 IIIb가
 26.4%, 40.9%

3) 1997 UICC
 가
 2002 2 28
 42.4±24.3 (1 90.6)
 67
 1 17
 , 66

4) SPSS 10
 Kaplan Meier test 가 , P 0.05 Log rank
 121 26 78
 , 52.7±12.3
 가
 가
 1/3 2
 가 13 (54.2%),
 36 (67.9%), 33 (75%)
 IIIb가
 26.4%, 40.9%

Table 1. Patients' characteristics

Characteristic	S* (n=24)	PPS [†] (n=53)	PS [‡] (n=44)	P-value
No. of patient (%) [§]				
Age (yr)	54.6±10.6	50.7±12.7	53.9±12.6	0.312
Sex (M/F)	17/7	34/19	32/12	0.641
Tumor size (cm)	6.2±3.0	5.7±2.5	7.1±2.5	0.016
Location of tumor				0.058
Upper third (U)	1 (4.2)	8 (15.1)	4 (9.1)	
Middle third (M)	7 (29.2)	8 (15.1)	3 (6.8)	
Low third (L)	1 (4.2)	0 (0.0)	0 (0.0)	
More than 2 areas	2 (8.3)	1 (1.9)	4 (9.1)	
More than 2 areas including U area	13 (54.2)	36 (67.9)	33 (75.0)	
Stage				0.278
II	6 (25)	17 (32.1)	7 (15.9)	
IIIa	8 (33.3)	17 (32.1)	10 (22.7)	
IIIb	6 (25)	14 (26.4)	18 (40.9)	
IV	4 (16.7)	5 (9.4)	9 (20.5)	

S* = splenectomy only; PPS[†] = pancreas-preserving splenectomy; PS[‡] = pancreateosplenectomy; [§] = data are given as number of patients, percentage, except for age and tumor size; ^{||} = significant.

Table 2. Pathologic results

Parameter	S* (n=24)	PPS [†] (n=53)	PS [‡] (n=44)	P-value
	No. of patient (%)			
LN metastasis				0.291
N0	6 (25.0)	13 (24.5)	7 (15.9)	
N1	9 (37.5)	21 (39.6)	10 (22.7)	
N2	6 (25.0)	16 (30.2)	21 (47.7)	
N3	3 (12.5)	3 (5.7)	6 (13.7)	
Depth of invasion				0.049
T1	0 (0.0)	0 (0.0)	0 (0.0)	
T2	0 (0.0)	5 (9.4)	0 (0.0)	
T3	24 (100)	48 (90.6)	44 (100)	
Differentiation				0.164
Well diff.	3 (12.5)	6 (11.3)	1 (2.3)	
Mod. diff.	2 (8.3)	13 (24.5)	7 (15.9)	
Poorly diff.	8 (33.3)	21 (39.6)	18 (40.9)	
Signet ring cell	11 (45.8)	13 (24.5)	18 (40.9)	

S* = splenectomy only; PPS[†] = pancreas-preserving splenectomy; PS[‡] = pancreatosplenectomy; ^{||} = significant.

Table 3. Number of dissected nodes

LN group	S*	PPS [†]	PS [‡]	P-value
	mean ± SD No. of dissected nodes			
N1	28.6 ± 11.9	33.0 ± 12.8	27.5 ± 15.7	0.120
N2	14.8 ± 7.6	14.3 ± 7.5	14.9 ± 7.9	0.935
N3	3.7 ± 3.6	2.5 ± 2.8	3.2 ± 2.8	0.284
Total	46.9 ± 15.1	50.5 ± 15.6	46.3 ± 19.4	0.277

S* = splenectomy only; PPS[†] = pancreas-preserving splenectomy; PS[‡] = pancreatosplenectomy.

Table 4. Tumor metastatic rate to LN10, LN11 according to each operation

Lymph node	S* (n=24)	PPS [†] (n=53)	PS [‡] (n=44)
	No. of patient (%)		
LN10	0 (0%)	5 (9.4%)	8 (18.2%)
LN11	3 (12.5%)	7 (13.2%)	15 (34.1%)

S* = splenectomy only; PPS[†] = pancreas-preserving splenectomy; PS[‡] = pancreatosplenectomy.

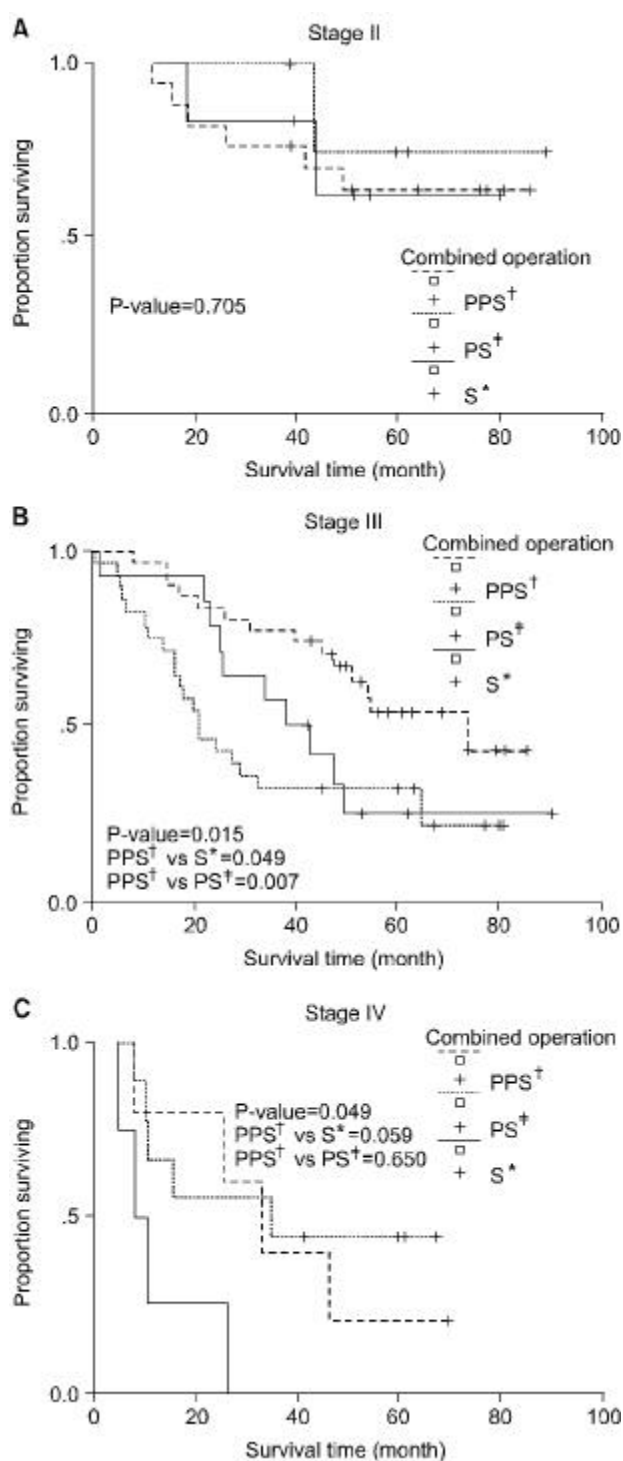


Fig. 1. Survival of each operations according to stages. S* = splenectomy only; PPS[†] = pancreas-preserving splenectomy; PS[‡] = pancreatosplenectomy.

(Table

1).

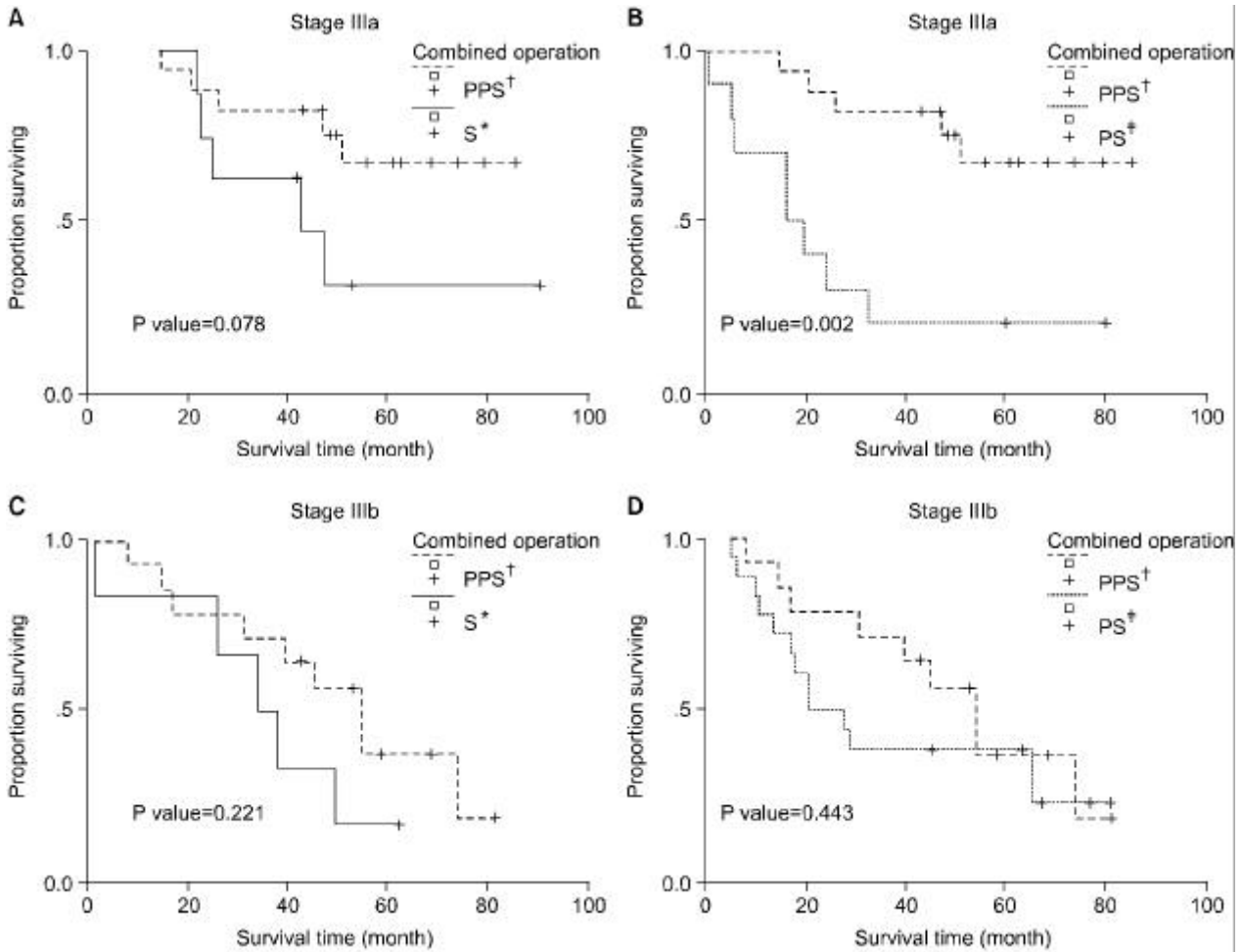


Fig. 2. Survival of stage IIIa and IIIb according to PPS and PS. PPS[†] = pancreas-preserving splenectomy; PS[‡] = pancreatectomy.

가
(Table 2). 1, 2, 3
가,
(Table 3). (LN10)
(LN11) LN 10
9.4%, 18.2%
, 11
13.2%, 34.1%
(Table 4).
II
III (25.0%),
(53.7%) (32.1%) 5
(Fig. 1). III IIIa IIIb
IIIa

Table 5. Complications

	S* (n=24)	PPS [†] (n=53)	PS [‡] (n=44)	P-value
Complications	No. of patient (%)			
Infection	1	4	4	
Lung complication	2	3	5	
Pancreatic fistula	1	0	0	
DM	0	1	2	
Leakage	0	1	2	
Hemorrhage	2	0	0	
Total	6 (25%)	9 (17%)	13 (30%)	0.317

S* = splenectomy only; PPS[†] = pancreas-preserving splenectomy; PS[‡] = pancreatectomy.

(20.0%) 5 (67.1%) 가 .(5)

, IIIb
(Fig. 2). 가

가
,
가 .(1)

,
가 ,
(Table 5). ,5 ,

5 , , , 가
, , , 1/3 가 2

, (1,6,7) 가
Maruyama (5) IV 가 9 (20.5%)
IIIb 18 (40.9%)
14 (26.4%)

가
가
(1,8) 가 . 1/3

10 11
15%, 12% .(11)

10 11
9.4%, 13.2% 18.2%,
34.1% 11 34.1%

가
가
(4) D2 가 1967 Kanai
III 5
(5-YSR 25.0%, 53.7%, 32.1%),

10 11 74.7%가
64.5%가

가
가
가가
Maruyama (5) 1987

10 11 , , ,
(40.9%) IIIb 가
IIIb IV 가 가
10 11 , , ,
IIIb 가 18
14 (26.4%)

가 (1,12) IIIb
 5 III IIIa IIIb
 20.0% (P=0.001) IIIa 67.1%,
 37.5%, IIIb
 가 38.9% (P=0.442) IIIb가 IIIa
 IIIa Kinoshita
 (13) IIIb
 가
 가 LN 11
 가

- 2) Kitamura K, Nishida S, Yamamoto K, Ichikawa D, Okamoto K, Taniguchi H, et al. Lymph node metastasis in gastric cancer in the upper third of the stomach--surgical treatment on the basis of the anatomical distribution of positive node. *Hepatogastroenterology* 1998;45(19):281-5.
- 3) Wanebo HJ, Kennedy BJ, Winchester DP, Stewart AK, Fremgen AM. Role of splenectomy in gastric cancer surgery: adverse effect of elective splenectomy on longterm survival. *J Am Coll Surg* 1997;185(2):177-84.
- 4) Kanai H. Significance of combined pancreatosplenectomy in gastric resection for gastric carcinoma. *J Jpn Soc Cancer Ther* 1967;2:328-38.
- 5) Maruyama K, Sasako M, Kinoshita T, Sano T, Katai H, Okajima K. Pancreas-preserving total gastrectomy for proximal gastric cancer. *World J Surg* 1995;19(4):532-6.
- 6) Nakamura K, Ueyama T, Yao T, Xuan ZX, Ambe K, Adachi Y, et al. Pathology and prognosis of gastric carcinoma. Findings in 10,000 patients who underwent primary gastrectomy. *Cancer* 1992;70(5):1030-7.
- 7) Maruyama KK, Okabayashi T. Kinoshita. Progress in gastric cancer surgery in Japan and its limits of radicality. *World J Surg* 1987;11(4):418-25.
- 8) Robertson CS, Chung SC, Woods SD, Griffin SM, Raimes SA, Lau JT, et al. A prospective randomized trial comparing R1 subtotal gastrectomy with R3 total gastrectomy for antral cancer. *Ann Surg* 1994;220(2):176-82.
- 9) Kwon SJ. Spleen preserving total gastrectomy. *Gastric cancer 2002 "Live Surgery & Chemotherapy"* Yonsei Medical Center 151-8.
- 10) Shin DW, Yoo CH, Noh SH, Min JS. Combined Resection in Advanced Gastric Cancer. *J Korean Cancer Assoc.* 1999; 31(3):48-57.
- 11) Okajima K, H Isozaki. Splenectomy for treatment of gastric cancer: Japanese experience. *World J Surg* 1995;19(4): 537-40.
- 12) Kawaguchi M, Muto K, Nichimoto A, Miyashita K, Tanaka O, Sasaki K. Clinical implication of splenectomy associated with the operation for gastric cancer. *J Clin Surg* 1983;38: 185-8.
- 13) Kinoshita T, Maruyama K, Sasako M, Okabayashi K. Lymph node dissection around the splenic artery for gastric cancer--a comparative study of pancreatectomy and pancreas-preserving operation. *Nippon Geka Gakkai Zasshi* 1992;93(2):128-32.

REFERENCES

- 1) Roder JD, Bonenkamp JJ, Craven J, van de Velde CJ, Sasako M, Bottcher K, et al. Lymphadenectomy for gastric cancer in clinical trials: update *World J Surg* 1995;19(4):546-53.