

3

가

Three Cases of Biliary Cystadenoma and Biliary Cystadenocarcinoma

Jun Hyun Lee, MD, Gi Young Sung, MD, Hyung Min Jin, MD, Do Sang Lee, MD, Wook Kim, MD, Il Young Park, MD, Dong Gu Kim, MD, Jong Man Won, MD. and Jean A Kim, MD.¹

A biliary cystadenoma and a cystadenocarcinoma are rare intrahepatic cystic neoplasm. The clinical feature is not marked but abdominal fullness and mass are the most common symptoms. The tumor is commonly a large multilocular cystic mass which requires hepatectomy for cure. We experienced one case of biliary cystadenoma and two cases of biliary cystadenocarcinoma. The biliary cystadenoma case was a 58-year-old female with right upper quadrant discomfort for 5 months and a 17 cm sized multilocular cystic mass. The serum CA 125 level was elevated but returned to normal level after resection. A right hepatectomy was performed and the patient has had no recurrence for 14 months after the resection. One of the biliary cystadenocarcinoma cases was a 42-year-old man with a 12 cm sized multilocular cystic mass in the right upper quadrant of his abdomen. A right hepatectomy was performed and the patient has had no recurrence for 12 months after the resection. The other biliary cystadenocarcinoma case was a 70-year-old man with right upper quadrant pain and a 5 cm sized cystic mass. A left hepatectomy was performed and the patient has had no recurrence for 8 month after the resection. The treatment of choice for a biliary cystadenoma or cystadenocarcinoma is complete resection. We report three cases of biliary cystadenoma and cystadenocarcinoma with a review of the literature. (*J Korean Surg Soc* 2003;64:84-88)

Key Words: Biliary cystadenoma, Biliary cystadenocarcinoma, Hepatectomy

Department of Surgery, ¹Pathology, College of Medicine, The Catholic University of Korea, Seoul, Korea

5% , (1)
가
(2,3)
가 (4)
3
1) 1
58 5
가 1
가 가
AST/ALT 23/18 U/L, -GPT 55U/L,
protein 7.2 g/dl, albumin 4 g/dl, alkaline phosphatase 53 U/L,
Total bilirubin 1.2 mg/dl, prothrombin time 12 sec (INR 1),
ICG (R₁₅) 3%
CEA 1.2 ng/dl, CA 19-9 35.6 U/ml
CA 125 82.9 IU/ml (< 35 IU/ml) 가
17 × 12 × 17
cm 가
(Fig. 1).
가 가

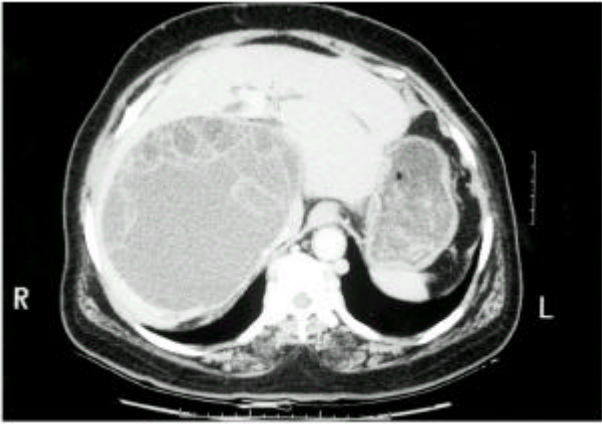


Fig. 1. Abdominal CT shows a large multicystic mass in the right lobe of the liver with multiple septation (Case 1).

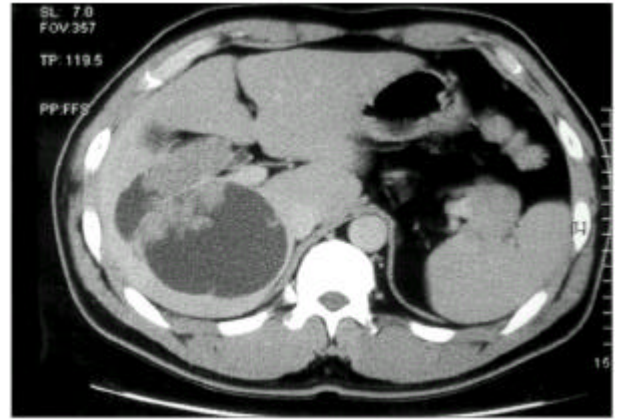


Fig. 3. Abdominal CT shows a large cystic mass in the right lobe of the liver with multiple septation and papillary growing mass (Case 2).

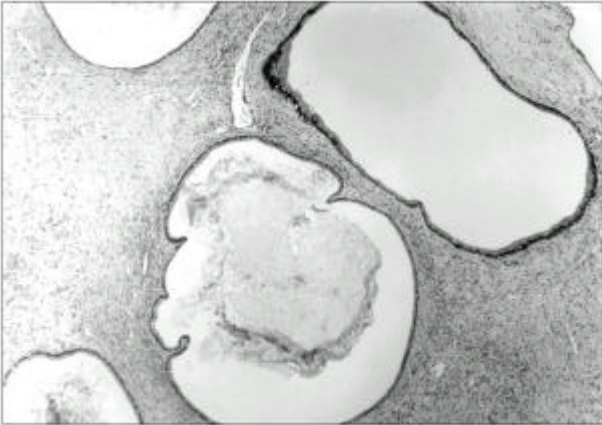


Fig. 2. Microscopic findings. Cystadenoma shows a mucinous columnar epithelial lining with mesenchymal stroma which resembles ovarian stroma (Case 1. H&E stain, $\times 40$).

17 × 14 × 10 cm

가

(mesenchymal stroma) (Fig. 2).

14

CA 125 13.59 IU/mL

2) 2

42

가

가

가

AST/ALT 15/23 U/L, -GPT 58 U/L,
protein 6.3 g/dl, albumin 4.2 g/dl, alkaline phosphatase 201
U/L, Total bilirubin 0.67 mg/dl, prothrombin time 12.6 sec
(INR 1.2), ICG (R₁₅) 6%

-fetoprotein 2 ng/ml

11 × 8 × 10 cm

가

가 (Fig. 3).

가

6 7

12 × 10 × 10 cm

가

가

(Fig. 4).

12

3) 3

70

1

가

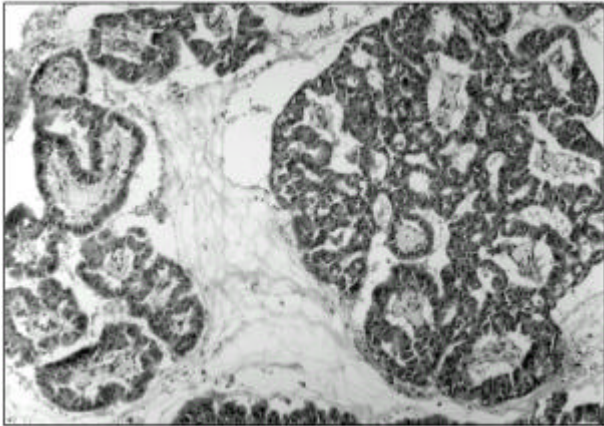


Fig. 4. Microscopic findings. Biliary cystadenocarcinoma shows a papillary and solid appearance in the cystic space. The epithelial lining shows multiple layered papillary growing and atypical cell (Case 2. H&E stain, $\times 100$).

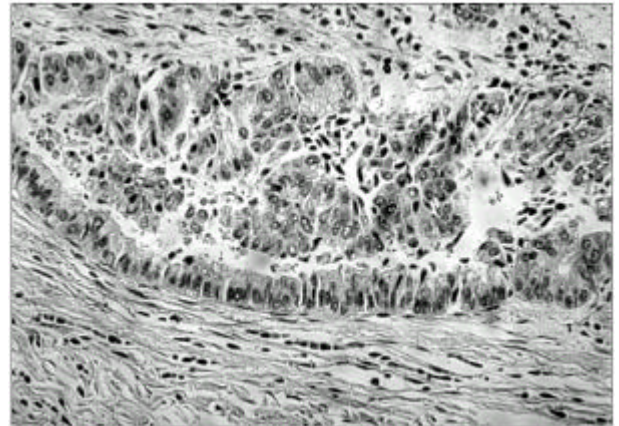


Fig. 6. Microscopic finding. Biliary cystadenocarcinoma shows a mucinous columnar epithelial lining with papillary growing and atypical cells (Case 3, H&E stain, $\times 100$).

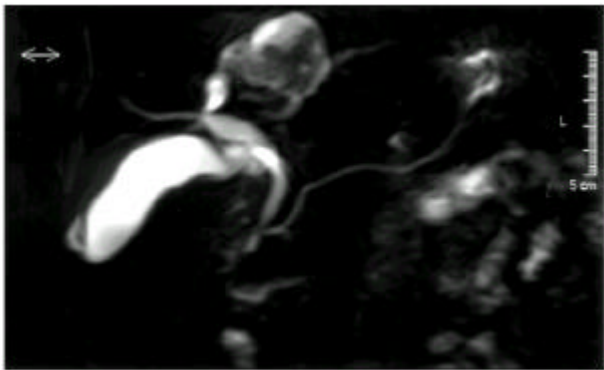


Fig. 5. MRCP shows a cystic dilatation with mass in left intrahepatic bile duct (Case 3).

AST/ALT 312/266 U/L, -GPT 89 U/L, protein 6.9 g/dl, albumin 4.4 g/dl, alkaline phosphatase 298 U/L, Total bilirubin 2.1 mg/dl, prothrombin time 12.2 sec (INR 1.1), ICG (R₁₅) 7% . -fetoprotein 3.02 ng/ml, CEA 1.78 ng/dl, CA 15-3 13.3 U/ml CA 19-9 58.3 U/ml (<37 U/mL) 가 . 가 2, 4 5 cm 가 . 가 2, 4 5 cm 가 . 가 2, 3, 4 5 cm 가 (Fig. 5).

5×4 cm 가 2, 3, 4 가 (Fig. 6). 8 가 5% (I) 30 가 .(5-9) 50%, 30%, 10% 가 , (10) 2 , 30 50 , 60 .(I, 6, 10) 가 가 가 .(I, 10) , .(10) 35% , Wang (4)

가 . 가 가 , 가
 가 가 .(16,17)
 가 가 가
 ,(2) (7)
 .(1,11) 가
 .(12)
 .(3) 가 .(18)
 17 .(11)
 Wood (3) 6 (7)
 15 가 가
 가 가
 가 가
 (11) 가 .(1,3,13) Wheeler
 가 .(19)
 가
 , (6) 1 2 C. sinensis 가
 C. sinensis가 가 (10,16)
 가 , 가
 bilirubin, alkaline phosphatase, AST, ALT
 .(7) CEA, -FP
 Thomas (14) 가 가
 CA 19-9 가 , (8)
 가 CA 19-9
 CA 19-9
 . CA 125 (5) 가
 CA 125 가가
 가 CA 125가 .(11,21) 1
 , , , , , , , , Caroli ,
 .(15)
 .(16)
 .(15,16) 가 가
 가 가 .(1,22) 가
 가 , 가
 가 .(1,10)
 가 .(16)

(1,22)

가 (3,4)
14, 12, 8

가 가
CA 19-9가
1 CA 125가
가

REFERENCES

- 1) Ishak KG, Willis GW, Cummins SD, Bullock AA. Biliary cystadenoma and cystadenocarcinoma: Report of 14 cases and review of the literature. *Cancer* 1977;38:322-38.
- 2) Gadzjev E, Ferlan-Marolt V, Grkman J. Hepatobiliary cystadenomas and cystadenocarcinoma: Report of five cases. *HPB Surg* 1996;9(2):83-92.
- 3) Woods GL. Biliary cystadenocarcinoma: Case report of hepatic malignancy originating in benign cystadenoma. *Cancer* 1981;47:2936-40.
- 4) Wang YJ, Lee SD, Lai KH, Wang SS, Lo KJ. Primary biliary cystic tumors of the liver. *Am J Gastroenterol* 1993;88:599-603.
- 5) Hwang S, Lee SG, Lee YJ, Park KM, Gong GY, Min PC. Four cases of intrahepatic biliary cystadenoma and cystadenocarcinoma. *J Korean Surg Soc* 1999;57:1040-5.
- 6) Suh KS, Ahn MS, Kim SW, Lee KU, Park YH, Kim ST. Biliary cystadenoma and cystadenocarcinoma. *J Korean Surg Soc* 1996;50:410-6.
- 7) Jung JK, Chung JP, Shin ET, Kim KC, Lee SJ, Lee KS, et al. A clinical study on intrahepatic biliary cystadenoma and cystadenocarcinoma. *Korean J Gastroenterol* 1999;33:417-24.
- 8) Shin HD, Song IH, Ki MJ, Lee JH, Kim BH, Shin JW, et al. A case of intrahepatic biliary cystadenoma with markedly elevated CA 19-9. *Korean J Gastroenterol* 2001;37:218-21.
- 9) Kim JH, Kim KH, Seo BJ, Lee BG, Hwang SH, Lee JS, et al. A case of carcinomatous transformation from biliary cystadenoma. *Korean J Gastroenterol* 1992;24:1451-7.
- 10) Lewis WD, Jenkins RL, Rossi RL, Munson L, Remine SG, Cady B, et al. Surgical treatment of biliary cystadenoma: A report of 15 cases. *Arch Surg* 1988;123:563-8.
- 11) Wheeler DA, Edmanson HA. Cystadenoma with mesenchymal stroma in the liver and bile duct: A clinicopathological study of 17 cases, 4 with malignant change. *Cancer* 1985;56:1434-45.
- 12) Cahil CJ, Bailey ME, Smith MGM. Mucinous cystadenoma of the liver. *Clin Oncol* 1982;8:171-7.
- 13) Nakajima T, Sugano I, Matsuzaki O, Nagao K, Kondo Y, Miyazaki M, et al. Biliary cystadenocarcinoma of the liver: A clinicopathological and histochemical evaluation of the nine cases. *Cancer* 1992;69:2426-32.
- 14) Thomas JA, Scriven MW, Puntis MCA, Jasani B, Williams GT. Elevated serum CA 19-9 levels in the hepatobiliary cystadenoma with mesenchymal stroma: Two cases reports with immunohistochemical confirmation. *Cancer* 1992;70:1841-6.
- 15) Choi BI, Lim JH, Han MC, Lee DH, Kim HS, Kim YI, et al. Biliary cystadenoma and cystadenocarcinoma: CT and sonographic finding. *Radiology* 1989;171:57-61.
- 16) Korobkin M, Stephens DH, Lee JK, Stanley RJ, Fishman EK, Francis IR, et al. Biliary cystadenoma and cystadenocarcinoma: CT and sonographic finding. *Am J Roentgenol* 1989;153:507-11.
- 17) Federle MP, Filly RA, Moss AA. Cystic hepatic neoplasm: Complementary role of CT and sonography. *Am J Roentgenol* 1981;136:345-8.
- 18) Forrest ME, Cho KJ, Shields JJ, Wicks JD, Silver TM, McCormick TL. Biliary cystadenomas: Sonographic-angiographic-pathologic correlation. *Am J Roentgenol* 1980;135:723-7.
- 19) Iemoto Y, Kondo Y, Fukamachi S. Biliary cystadenocarcinoma with peritoneal carcinomatosis. *Cancer* 1981;48:1664-7.
- 20) Devaney K, Goodman ZD, Ishak KG. Hepatobiliary cystadenoma and cystadenocarcinoma: A light microscopic and immunohistochemical study of 70 patients. *Am J Surg Pathol* 1994;18:1078-91.
- 21) Akwari OE, Tucker A, Siegler HF, Itani KMF. Hepatobiliary cystadenoma with mesenchymal stroma. *Ann Surg* 1990;211:18-28.
- 22) O'Shea JS, Shah D, Coopermann AM. Biliary cystadenocarcinoma of extrahepatic duct origin arising in the previously benign cystadenoma. *Am J Gastroenterol* 1987;82:1306-10.